



SKYi  
MANAS LAKE

tower 08

3bhk Apartments





Computer generated image. Artist's impression. image not to scale.

# SKYi

## MANAS LAKE





# SKYi MANAS LAKE

## The Residences

- Phase 1 Building 1, 2 & 3
- Phase 2 Building 4 & 5
- Phase 3 Building 8
- Phase 4 Under Planning

\* Terms & Conditions apply

## Amenities & Features

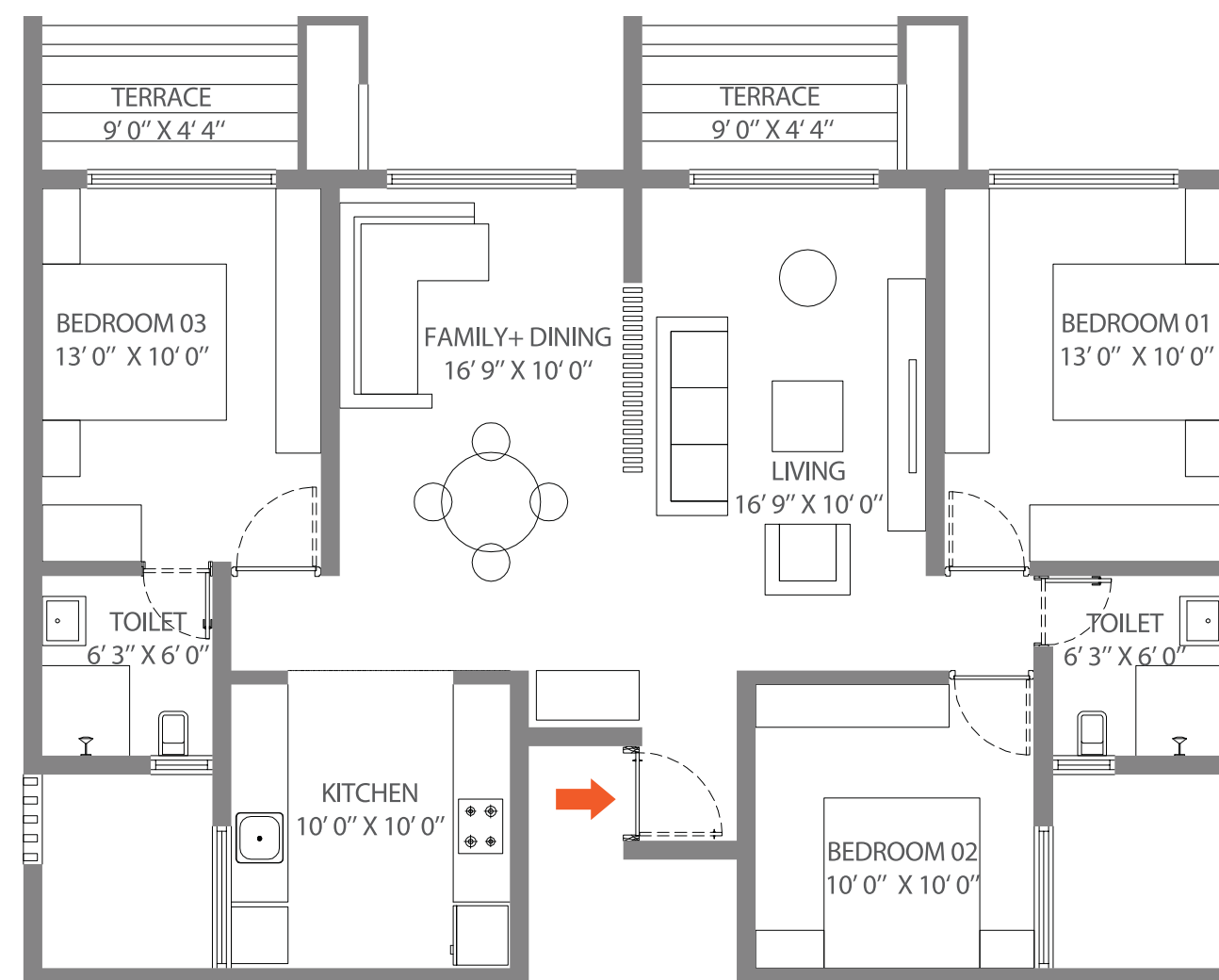
- |          |                                     |            |  |
|----------|-------------------------------------|------------|--|
| <b>A</b> | Main Access Road                    | <b>F</b>   | Sports Facilities <ul style="list-style-type: none"><li>· Tennis Court</li><li>· Futsal Court</li><li>· Basketball Court</li></ul> |
| <b>B</b> | Main Entrance Gate                  | <b>G</b>   | Utilities  |
| <b>C</b> | 4 Lane Internal Road                | <b>FD</b>  | Future Development Under Planning  |
| <b>D</b> | Multi Purpose Ground / Central Park | <b>FD*</b> | Reserved for Proposed Building   |
| <b>E</b> | Toddler Play Area                   |            |  |



3 BHK

Odd Floors

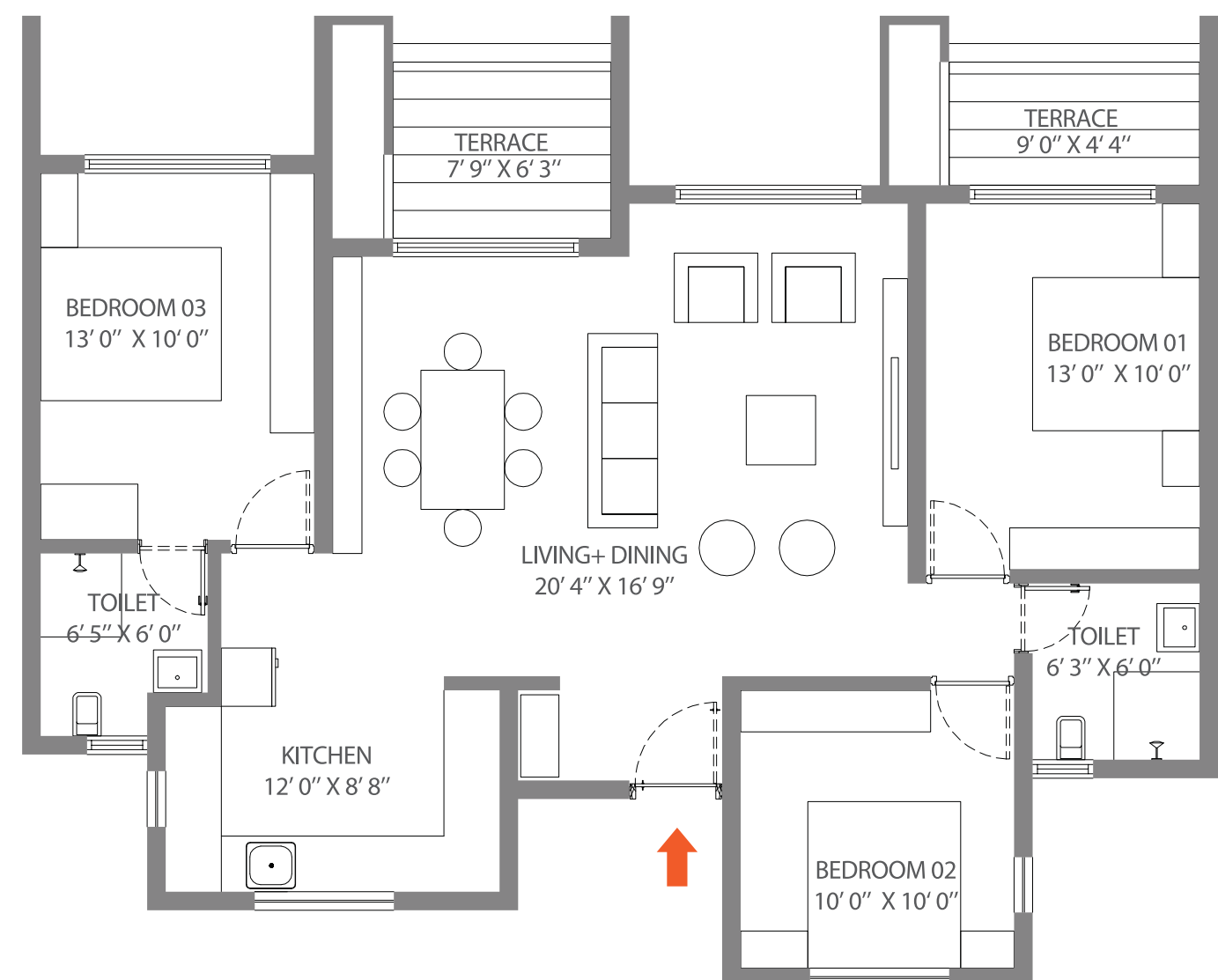
1362 L



3<sub>BHK</sub>

Odd Floors

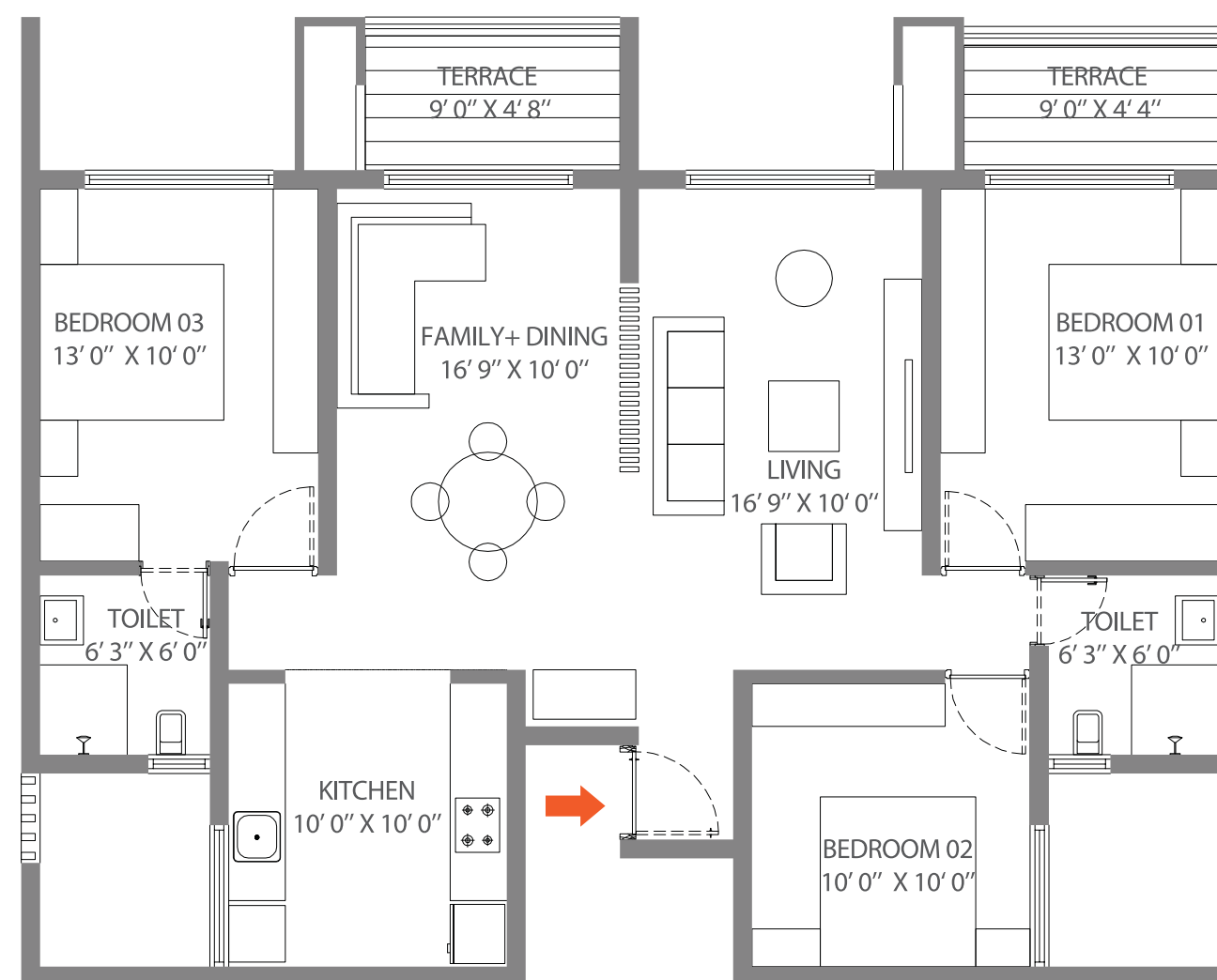
1354 L



3 BHK

Even Floors

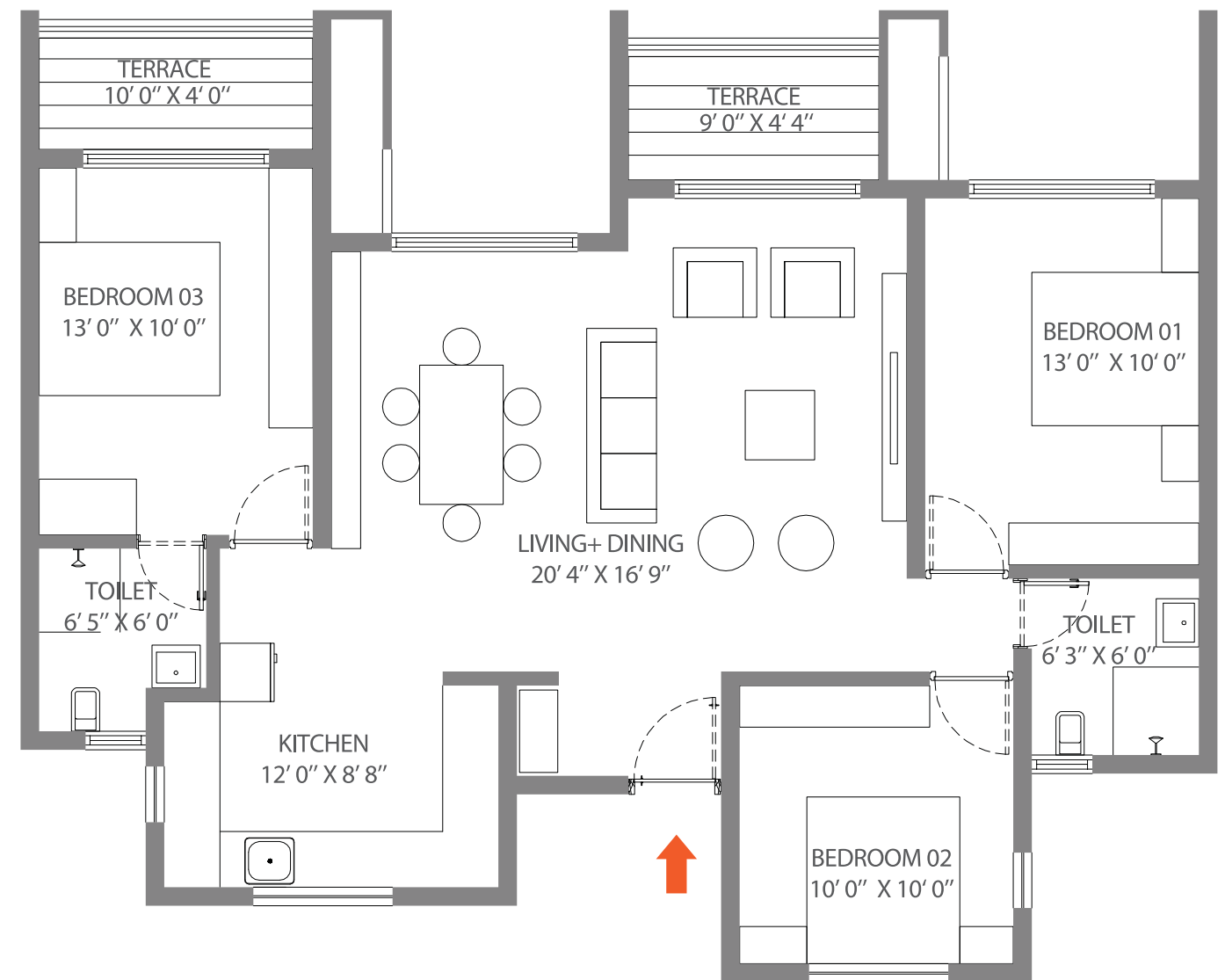
1362 L



3 BHK

Even Floors

1329 L



Odd Floor Plan



3 BHK

PRODUCT CODE

1362 L



3 BHK

PRODUCT CODE

1354 L



Disclaimer : Please refer to the sanction plan. These apartments are sanctioned as two separate one bedroom apartments which are combined to create above shown apartments.



Even Floor Plan



3 BHK

PRODUCT CODE

1362 L



3 BHK

PRODUCT CODE

1329 L



Disclaimer : Please refer to the sanction plan. These apartments are sanctioned as two separate one bedroom apartments which are combined to create above shown apartments.

# Area Statement

PRODUCT CODE	USABLE AREA	
1362 L	1010 sq.ft.	<div>PRODUCT CODE 1362 L</div> <div>Usable Area = Carpet Area* + Terrace / Balcony + Service Area</div> <div>1010 sq.ft.(94 sq.mt.) = 928 sq.ft.(86.22 sq.mt.) + 77 sq.ft.(7.14 sq.mt.) + 5 sq.ft. (1 sq.mt.)</div>
1354 L	1006 sq.ft.	<div>PRODUCT CODE 1354 L</div> <div>Usable Area = Carpet Area* + Terrace / Balcony + Service Area</div> <div>1006 sq.ft.(93 sq.mt.) = 907 sq.ft.(84.28 sq.mt.) + 86 sq.ft.(8.03 sq.mt.) + 12 sq.ft.(2 sq.mt.)</div>
1329 L	984 sq.ft.	<div>PRODUCT CODE 1329 L</div> <div>Usable Area = Carpet Area* + Terrace / Balcony</div> <div>984 sq.ft. (91.45 sq.mt.) = 907 sq.ft. (84.28 sq.mt.) + 77 sq.ft. (7.17 sq.mt.)</div>

S.A. - Service Area

\* Includes Carpet area as per RERA & permissible enclosed balcony if any.



# Fact File

## LIVING

- Flooring of 2’ x 2’ vitrified tiles with skirting
- Internal walls with smooth POP finish and high quality semi acrylic paint
- Ceramic tiles for terraces
- TV and telephone points
- Sufficient light points

## BEDROOM

- Vitrified tile flooring
- TV point in the master bedroom

## KITCHEN

- Granite kitchen platform with stainless steel sink
- 2’ x 2’ tiles with skirting
- Glazed ceramic tile up to 2 ft. above the platform
- Additional electrical points for appliances
- Washing Machine ready space

## BATHROOM

- Neat toilet designs for best space utilisation
- Glazed ceramic tiles upto 7 ft.
- Premium fittings & sanitary ware (Jaquar, Grohe, Cera, Hindware or Equivalent)
- Single lever hot & cold mixer with overhead shower
- Provision for exhaust fan & geyser

## SAFETY & SECURITY

- Video door phone
- Firefighting equipment in building
- Seismic resistant design
- CCTV surveillance at entrance lobby of building
- Stretcher Lift in building
- Fire staircase & Refuge area for emergency in building

## FEATURES/UTILITIES

- Power backup for 1 LED Tubelight & Fan in each room for each unit
- Power backup for all essential common facilities of building
- Garbage chutes
- Anti-termite treatment for building plinth
- Impressive main entrance & lobbies
- Car parking and separate visitor parking
- Clean Water supply
- Automatic speed elevators with power backup for one
- Concealed copper wiring with branded modular electrical fittings
- Sufficient electrical points
- Powder coated aluminium sliding windows
- Mosquito mesh for windows and sliding doors
- Safety Grill for windows from inside



---

The Developer                      Enerrgia SKYi Venture LLP

---

Site Office                              10 minutes straight drive  
from Chandani Chowk  
on Paud Road.  
Turn left at Manas Resorts.

+91 020 6790 6790

---

Corporate Office                      Shivana, Above Royal  
Enfield Showroom,  
Bhusari Colony, Paud Road,  
Kothrud, Pune - 411 038

Tel: 020 2528 0029

---



MahaRERA Registration no.  
PHASE I (Tower 1,2,3) P521000000449  
PHASE II (Tower 4, 5) P521000000513  
PHASE III (Tower 8) P521000000514

skyi.com

This Brochure is purely conceptual and not a legal offering. Enerrgia SKYi Ventures LLP reserve the right to add, delete or alter any details and/or specifications in its endeavour to make improvements as and when required. The images, layouts and maps presented in the brochure are indicative purposes only and same are not to the scale. The floor plan shown here is indicative, measurements are prior to application of finishes & same are subject to minor variation. The Actual floor plan of a particular unit could be mirror image of floor plan shown here which may have different orientation, openings & the same is subject to offsets created by structural elements such as elevational/facade features, columns & beams etc. Allottee must check the actual floor plan of the unit he/she is intending to buy and the same is available at project sales office. The furniture/Kitchen/Bathroom layout & accessories shown in the plan are only for the purposes of illustrating/indicating a possible furniture layout & the same is not a part of standard offering. Design , planning , further developments in surroundings areas etc. shown is tentative, subject to modifications on account of any change in plans, permissions and final approval of the respective authorities. All rights reserved. No part of this brochure may be reproduced, stored in a retrieval system, or transmitted, in any form or by any means, electronic, mechanical, photocopying, recording or otherwise, without the prior permission of Enerrgia SKYi Ventures LLP.